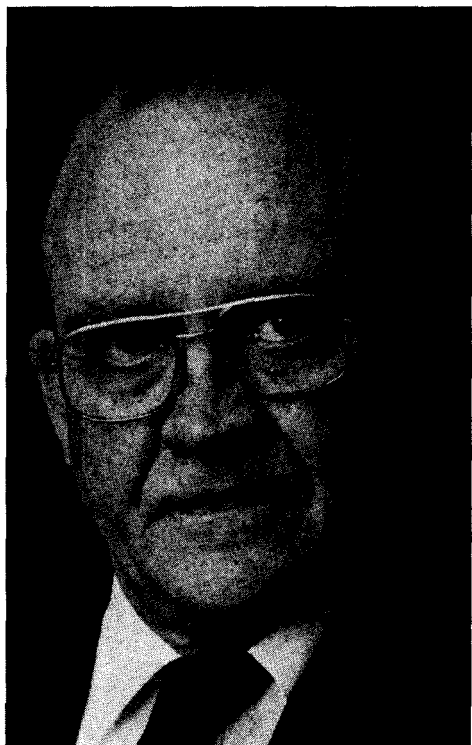
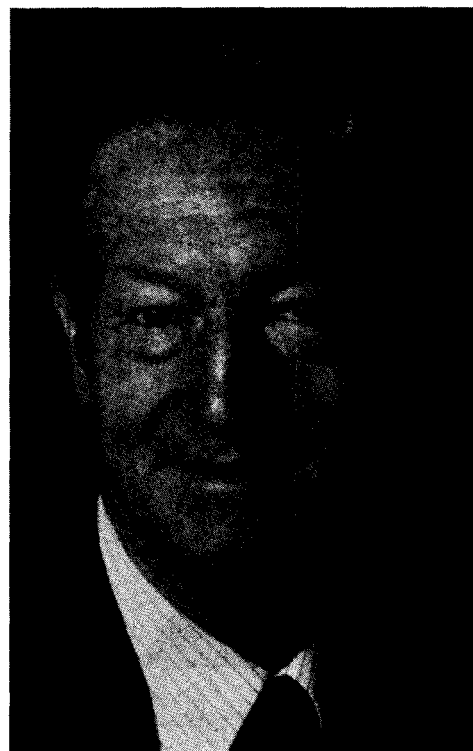


# Introducing your Council . . .

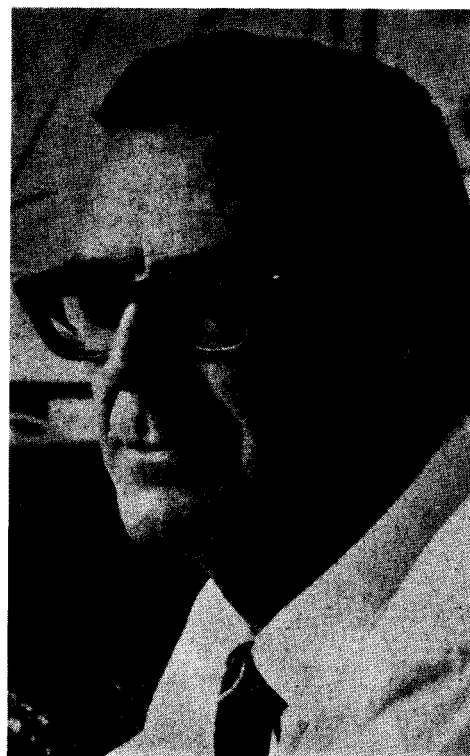


**Dr J. P. Hugo, Pr. Eng.**, after obtaining a B.Sc. (Eng.) in Metallurgical Engineering at the University of the Witwatersrand in 1948, gained about 9 months' practical experience in a British steelworks, followed by post-graduate studies at Sheffield University, leading to a Ph.D. (Metallurgy) in 1953. After nine months as Technical Trainee and Production Assistant at Iscor, Vanderbijl, and six years as Head: Metallurgy Division, National Mechanical Engineering Research Institute, C S I R, he joined the Atomic Energy Board (AEB) in January 1960. He spent seventeen months in nuclear training at the Argonne National Laboratory, U.S.A., and progressed rapidly in the AEB, becoming Head and subsequently Director: Physical Metallurgy Division, Deputy Director General (November 1967), Deputy President (August 1970), and Managing Director, Nuclear Development Corporation of S.A. (Pty) Ltd (NUCOR) (July 1982). (On 1st July, 1982, the AEB was re-established as NUCOR.) He is a member of the Council for Mineral Technology (Mintek), and of the Board of Management, South African Institute for Medical Research, and was President of The South African Institute of Mining and Metallurgy in 1972-1973. He is also a Faculty Member of the Suid-Afrikaanse Akademie vir Wetenskap en Kuns and Honorary Professor of the Department of Material Science and Metallurgical Engineering at the University of Pretoria.

**Mr G. Y. Nisbet, Pr. Eng.**, holds a B.Sc. (Min.) from the University of the Witwatersrand (1948) and a P.M.D. from Harvard University, U.S.A. (1966). On graduating, he was awarded the Chamber of Mines' Gold Medal. He spent the years 1942-1946 in the South African Artillery, taking part in the North African and Italian Campaigns. His business appointments include the following: General Manager C.D.M. and Consulting Engineer, Anglo American Corporation Gold Division; and Consulting Engineer and Deputy Managing Director, Gold and Uranium Division, Anglo American Corporation. He is now Executive Director of the Johannesburg Consolidated Investment Company Limited, and Chairman and Managing Director of its Gold Division. He holds Directorships in many mining companies, being Chairman of Randfontein Estates Gold Mining Co. (Wits) Ltd, Elsburg Gold Mining Company, and Western Areas Gold Mining Co. Ltd, and was Vice President of the South African Chamber of Mines from 1982 to 1984. He is a Fellow of The Institution of Mining and Metallurgy, London, and was President of The South African Institute of Mining and Metallurgy in 1981-1982. He is also an Associate Member of the Association of Mine Managers, and a member of the Executive and Gold Producers Committees of the Chamber of Mines.



**Professor D. G. Krige**, holds a D.Sc. (Eng.) from the University of the Witwatersrand (1963) and a D.Eng. (H.C.) from the University of Pretoria (1981). From 1939 to 1944 he worked at Rand Leases Gold Mine, and for the next eight years in the Department of Mines, Government Mining Engineer's Division. In 1952 he became Group Financial Engineer, Anglovaal Ltd, and, from 1981 to the present, he has served as Professor of Mineral Economics at the University of the Witwatersrand, and as a private consultant on the geostatistical and financial evaluation of new mining projects. He has conducted courses in geostatistics in Germany, Greece, and Australia, and has lectured at universities in the U.S.A., Australia, Germany, and Greece. He has published widely in local and overseas technical journals, with other publications in the International APCOM Symposium Series and in the Monograph Series of The South African Institute of Mining and Metallurgy. He has for many years served as Honorary Treasurer of the Institute. His awards include six Silver Medals and two Gold Medals from the Institute, a Gold Medal from the Suid-Afrikaanse Akademie vir Wetenskap en Kuns (1982), and the William Krumbein Medal of the International Association for Mathematical Geology (1982). But perhaps the greatest recognition of his work on geostatistics has been the general adoption of the term *kriging* to describe his technique of ore evaluation.



**Dr P. T. Wedepohl** holds a B.Sc. (Hons.) from the University of the Witwatersrand (1953) and a Ph.D. from the University of Reading, England (1958). His early work concerned various properties of industrial diamonds (at the Diamond Research Laboratory) and the manufacture of diamonds (at the Adamant Research Laboratory, being one of the four senior members of the team that manufactured the first man-made diamonds outside the U.S.A. and Sweden). From 1962 to 1964, he was leader of the Damage and Defects Group at the Atomic Energy Research Establishment, Harwell, England, and from 1964 to 1969 worked in the Department of Physics at the University of the Witwatersrand. In that year, he became Professor of Physics at the Rand Afrikaans University. In January 1980, he joined the National Institute for Metallurgy (NIM) as Assistant Director in the Process Development Division, and is now Director of the Physical Metallurgy Division at the Council for Mineral Technology (Mintek), as NIM is now known. He is a member of the South African Institute of Physics and a Fellow of the British Institute of Physics, and became a Council Member of The South African Institute of Mining and Metallurgy in 1982. From 1965 to 1970 he was a Council Member of the South African Association for the Advancement of Science, and in 1967 and 1968 served as its representative on the Joint Council of Scientific Societies. He has published almost thirty papers in the technical literature, and several patents are registered in his name.

Details of another Member of Council, Professor M. D. G. Salamon, are given on page 150 of this issue.