

# Introducing your Council . . .

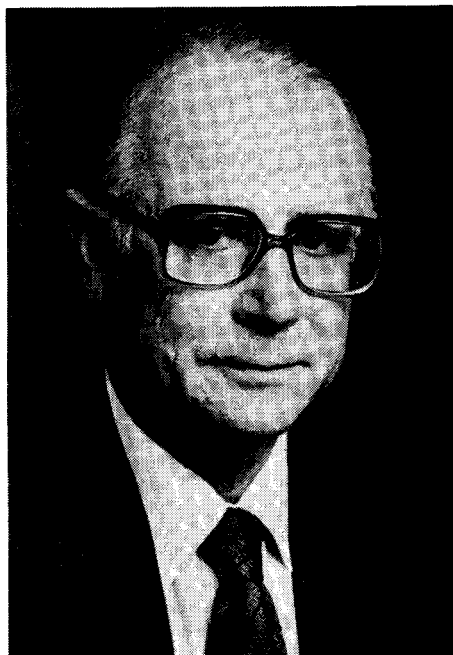
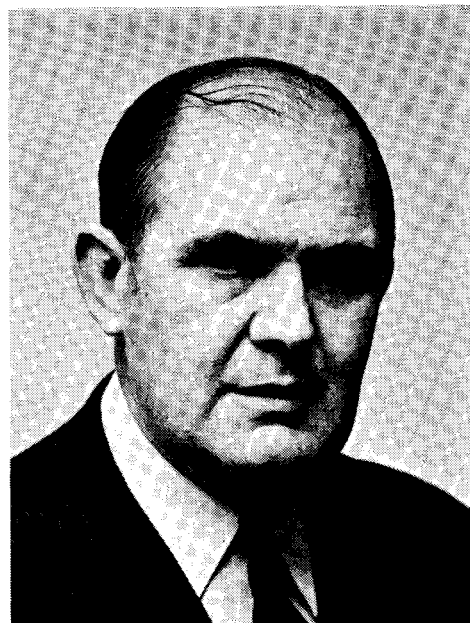


**Professor R. P. Plewman** graduated with a B.Sc. in mining engineering from the University of the Witwatersrand in 1943, after which he had two years of military service. After the war, a Rhodes scholarship took him to Oxford University, where he obtained an M.A. degree. On his return to South Africa, he worked at City Deep Limited in various capacities, and in 1955 he moved to the head office of Central Mining and Investment Corporation as technical assistant. In 1957 he was appointed assistant manager at Harmony Gold Mining Company in the Orange Free State. Early in 1964, he took up a professorial appointment at the University of the Witwatersrand, where he still occupies a chair of mining engineering. He is a Fellow of this Institute and served as President in 1974–1975. He is the author of numerous papers, two of which earned him the gold and the silver medals of the Institute. He is a member of the Association of Mine Managers of South Africa, a Council member of the South African Council for Professional Engineers, chairman of the Educational Advisory Committee of that Council, and a member of the Board of the Federation of Societies of Professional Engineers, of which he is a past president.

**Dr H. Wagner** graduated from the University of Leoben (Austria) in 1963, and worked at the same University as a lecturer from 1963 to 1968. During that time he developed an interest in rock mechanics, mine ventilation, and mine planning. He obtained a doctorate in mining engineering for theoretical work on rock cutting (1968). He then joined the Chamber of Mines Research Organization as a research officer in the field of rock mechanics. Over the years with the Chamber's Research Organization, his field of interest has widened to cover rock mechanics, drilling and blasting, mine planning, and all aspects of coal mining. He is at present Assistant Research Adviser to the Chamber of Mines of South Africa.

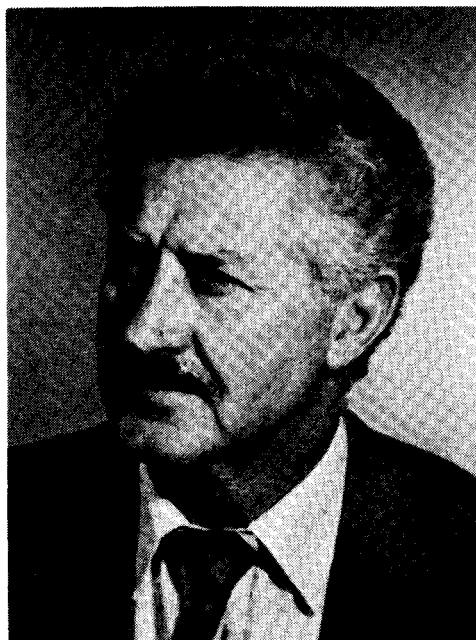


Mr P. W. J. van Rensburg attended St Andrew's College in Grahamstown before proceeding to the University of the Witwatersrand, where he obtained a B.Sc. (Eng.) degree *cum laude* in mining and metallurgy at the end of 1942 and was awarded the Chamber of Mines Scholarship and Gold Medal. After service in the Special Signal Services of the South African Corps of Signals, he joined the Gold Fields Group at Robinson Deep. With a break to take up his travelling scholarship in the U.S.A., he moved through most of the departments of the mine before becoming an underground manager, after which he had a few years at Venterspost. In 1954 he moved to Gold Fields head office, where he worked in many of the departments before becoming Deputy Chairman in November 1980, a post from which he retired in July 1984. During this period he was a director of a number of companies and chairman of several gold-mining companies. He has been a member of the Institute since 1941, when it was still the Chemical, Metallurgical and Mining Society of South Africa. He was elected to Council in 1965 and served as President in 1973-1974.



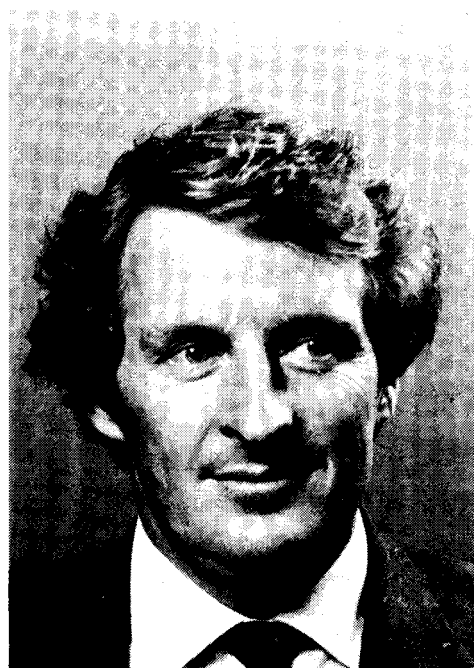
Dr M. G. Atmore, Deputy Technical Director of the Anglo American Corporation of South Africa, is also Manpower and Education Adviser to the Chamber of Mines of South Africa and a Visiting Professor at the Imperial College of Science and Technology, London. He holds a B.Sc. (Chem. Eng.) and Ph.D. (Wits), and is FIMM, F.I.Chem.E., F.R.S.C., C.Eng., and C.Chem. He is a Past President (1978-1979) and Honorary Life Fellow of the Institute.

# Introducing your Council . . .

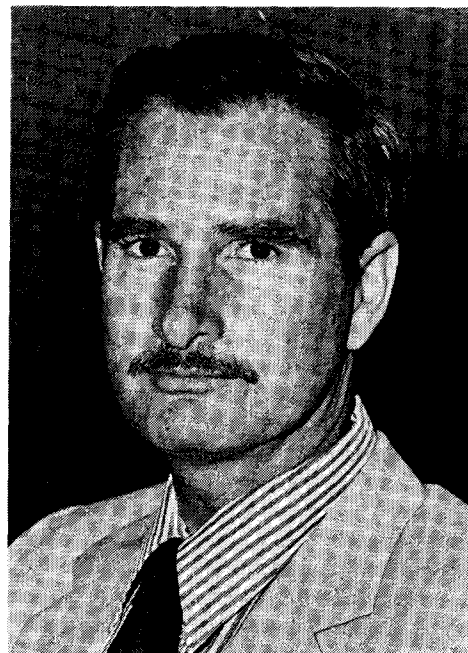


Mr D. A. Viljoen attended Queen's College, Queenstown, and then Rhodes University, where he gained a diploma in chemistry and a B. Comm. degree. During the Second World War, he served in the South African Air Force as a wireless operator and air gunner. After nineteen years in the Metallurgical Department of Union Corporation, he joined Gold Fields of South Africa, where he has been Consulting Metallurgist since 1974. He has been an active member of this Institute for many years, being a member of the O.F.S. Branch Committee from 1964 to 1968 and serving as its Chairman in 1965-1966. He has been a member of Council since 1972, and was President in 1979-1980. He is the Institute's representative on the Federation of Societies of Professional Engineers (since 1977) and the South African Council of Professional Engineers (since 1982).

Mr B. E. Protheroe, C.Eng., obtained a degree in Physical Metallurgy at University College, Cardiff, and an M.Sc. in corrosion science from Swansea University. He worked in the Ministry of Defence for five years, specializing in the selection of high-strength engineering materials for marine applications, leaving with the rank of Lieutenant Commander, R. N. In 1975 he joined the then Mining Technology Laboratory of the Chamber of Mines Research Organization, where he became involved in the materials-engineering problems associated with the development of prototype gold-mining equipment. After extensive work on reasons for the rapid deterioration of engineering materials underground and on methods for overcoming or minimizing these problems, he was appointed Chief of the Engineering Materials Division. In January 1984, he was appointed Manager of the newly formed Engineer-Materials Branch, where he is at present.



Mr N. J. Devine holds a B.Sc. in Metallurgical Engineering and a G.D.E Mining Engineering, both from the University of the Witwatersrand. He also has a P.M.D. from Harvard University. In addition to holding a Mine Surveyors Certificate of Competency and a Mine Overseers Certificate of Competency, he has a Mine Managers Certificate of Competency. He joined Anglo American Corporation in January 1958, and worked successively on mines at Chingola (Zaire), De Beers, President Brand Gold Mining Co. Limited, Western Deep Levels, and Bindura (Zimbabwe). He is at present at Welkom Gold Mine, where he is Mine Manager.



Dr Oskar Steffen graduated as a civil engineer at the University of the Witwatersrand in 1961, and obtained his master's degree in 1963. He worked for the then Nchanga Consolidated Copper Mines in Zambia from 1963, starting as a geotechnical engineer, and then moved into production, ultimately being appointed Open Pit Manager. In 1969, he returned to the University of the Witwatersrand, where he lectured in geotechnical engineering and also carried out consulting for clients until 1974, when he and two partners, Dr Andy Robertson and Mr Hennie Kirsten, started a consulting firm. He is a senior partner of the firm Steffen, Robertson and Kirsten Inc., which practises as mining and geotechnical consultants, with offices in the U.S.A., Canada, the U.K., Zimbabwe, Swaziland, Botswana, and a number of the larger cities in South Africa. He then studied rock-slope engineering as applied particularly to open-pit mines and was awarded a Ph.D. in 1978.