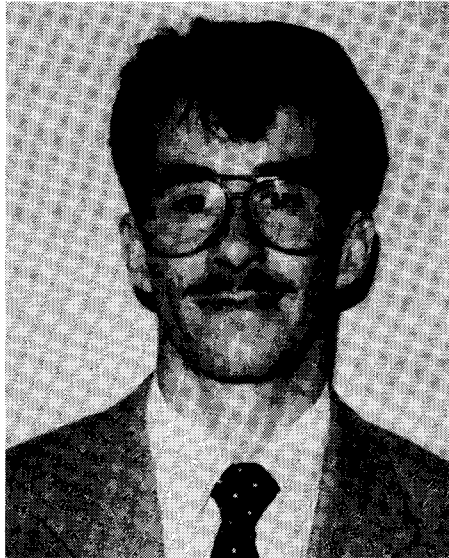


## Introducing new Council members



**Mr K.R. Beard** was born on 19th December, 1958. He attended Marist Brothers College, Observatory, and Marist Brothers College, Linmeyer. He was awarded a bursary by SEIFSA (Steel and Engineering Industries Federation of South Africa) and gained the degree of B.Sc. Eng. metallurgy at the University of the Witwatersrand in 1982. He is a member of the Engineers' Society of South Africa.

Except for a relatively brief exposure to the design and problems of mechanized gold mining at the Mining Technology Laboratory of the Chamber of Mines, the extent of his industrial experience has been primarily in the production of iron and steel at Highveld Steel and Iscor. This includes responsibility as a process-development engineer, process metallurgist, and quality-improvement engineer in plants concerned with steelmaking, casting, hot and cold rolling, continuous galvanizing, and continuous annealing. In April 1988, he was transferred to the management services division at Iscor Vanderbijlpark to serve as a quality-improvement engineer for the Works. In September 1988, he joined Coopers & Lybrand as a management consultant responsible for the development of their quality management practice.

He is married to Jenni, and they have one daughter.



**Mr G.A. Brown** was born on 27th June, 1934, and matriculated at St John's College. He obtained the degrees of B.Sc. Eng. (Met.) at the University of the Witwatersrand in 1957, and M. Met. at Sheffield University in 1959. He is a member of the Institution of Mining and Metallurgy (UK) and the Society of Mining Engineers (USA).

He started employment with Anglo American Corporation of SA Ltd in January 1960, initially in head office but later in operations at diamond and gold mines of the Group. In 1967, he was seconded to Anglo American International in London, and was involved in project work in the USA and UK for the Cleveland Potash project, as well as in Portugal.

On return to head office in Johannesburg, he continued with project and consulting work in the Gold and Diamond Divisions, followed by an appointment at the Anglo American Research Laboratories as Assistant Manager from late 1974 to 1977. He completed the EDP course at the Witwatersrand Business School in 1974, and joined the New Mining Business Division of Anglo in 1978. He was appointed Consulting Metallurgist in 1979, where he is mainly involved in new base-metal and gold projects, both in South Africa and Australia.



**Dr L.A. Cramer** was born in the USA and, having received a B.Sc. degree in metallurgical engineering from the Colorado School of Mines, he emigrated to South Africa in 1971. He enrolled as a graduate student at the University of Natal and successfully completed both an M.Sc. and a Ph.D. degree in chemical engineering.

After several years of experience in platinum and base-metal operations, he returned to the USA in employment with the Kennecott Copper Company, based in Salt Lake City. After two years there, he returned to Johannesburg Consolidated Investments in 1981, where he is employed as a Consulting Metallurgist seconded to Randfontein Estates Gold Mine.

Dr Cramer is married to Nesta who, together with their two sons, reside in Robin Park, a suburb of Randfontein. Dr Cramer continues to study through UNISA and expects to receive his B.A. degree in Philosophy and Economics in 1990.

**Mr J.P. Deetlefs** matriculated at Bothashof School, Salisbury, then Southern Rhodesia, at the end of 1958. He obtained a B.Sc. degree in geology at the University of Pretoria in 1961, and a B.Sc. (Ing.) degree in chemistry at the University of Pretoria in 1968.

After a short spell of work with the Department of Health at their chemical laboratories, he joined Iscor and started work at the Applied Research Division (Ore Dressing Section). From 1970 to 1978, he held various positions in the Industrial Engineering Division at Iscor Headquarters. In 1978 he was appointed Chief Industrial Engineer for the Grootegeluk Coal Mine.

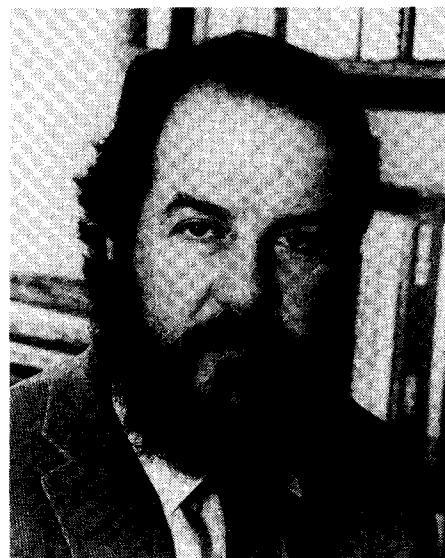
After a period of part-time study, he obtained a post-graduate diploma in mining at the University of Pretoria 1978, and then worked as Pit Superintendent at Sishen Iron Ore Mine, Manager, Mining at Grootegeluk Coal Mine, and Mine Manager at Grootegeluk Coal Mine. He is now Manager, Mining Operations, Open Pit Mines, being in charge of Sishen and Thabazimbi iron-ore mines and the Grootegeluk Coal Mine. He is also a Director of several companies.



**Dr J-P. Franzidis** was educated at Christian Brothers College, Green Point, and graduated from the University of Cape Town with a B.Sc. degree in chemical engineering in 1972, and an M.Sc. (Eng.) degree in 1975. He then joined the Anglo American Corporation as a metallurgical graduate, and worked for three years in operations involving the treatment of gold, uranium, diamonds, and coal.

He returned to university in 1979 and obtained a Ph.D. degree from the Open University in the UK in 1983. Since then, he has been a Senior Lecturer in the Department of Chemical Engineering at the University of Cape Town (UCT).

He has been active in developing a mineral-processing programme within the chemical-engineering curriculum at UCT. At present, with financial assistance from the Chamber of Mines, he is busy establishing an undergraduate mineral-processing laboratory in the Department. He is also involved in the supervision of chemical- and metallurgical-engineering students who are carrying out vacation-employment projects in the mining industry. His research is in the area of fine-coal processing, especially by flotation, and the production of super-clean coals.

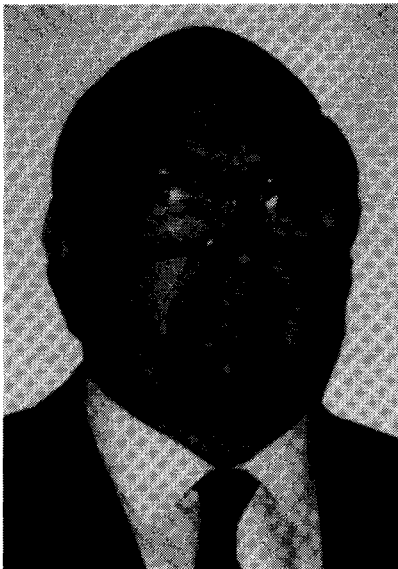


**Mr D.A.J. Ross-Watt** was born in Krugersdorp in 1946. After matriculating and completing his military training, he obtained a B.Sc. (Eng.) degree in civil engineering at the University of the Witwatersrand.

He started his career in the civil-engineering industry but, after obtaining a B.Sc. (Eng.) degree in mining at the University of the Witwatersrand, and winning the Chamber of Mines' Gold Medal, he changed to the mining industry. After 2 years at West Driefontein Gold Mine, he attended McGill University (Canada), where he obtained an M. Eng. degree in mineral economics (1977). His other mining activities included a further spell at West Driefontein as Mine Overseer and Relieving Assistant Manager (1977 to 1980), Black Mountain Mineral Development Co. as Underground Manager and Relieving Mine Manager (1980 to 1982), and Rooiberg Tin Limited as Mine Manager (1982 to 1986). He is currently with Gold Fields of South Africa as Consulting Engineer.

He is married to Susan, and they have 3 children.





**Mr G.T.G. Emère** graduated from the University of Keele during 1958 with an honours degree in geology, and then took up an appointment with Johannesburg Consolidated Investment Corporation at the Randfontein Estates Gold Mine.

In 1961 he moved to Western Deep Levels (Anglo American Corporation), where he was employed as an underground surveyor, with the intention of moving into the production environment. However, once certificated, he was immediately transferred to Vaal Reefs on promotion as a Section Surveyor, after which he moved to Western Reefs, and eventually President Steyn, as Assistant Chief Surveyor.

During 1969 he was invited to join the recently established Rock Mechanics Department in the Gold Division of Anglo American Corporation, a department that he eventually managed for some four years.

He then took up an appointment with the Harmony Gold Mining Company as Manager: Technical Services. In 1979 he obtained a Mine Manager's Certificate of Competency and subsequently spent a period of time as Underground and Section Manager. In 1983 he was transferred to East Rand Proprietary Mines Limited, and in 1985 he moved to the Rand Mines Head Office, where he is now Consulting Mining Engineer within the Gold, Platinum, and Uranium Division.



**Mr R.P. Mohring** was born in Johannesburg in 1947. After matriculating at King Edward VII School and a year in the Army Gymnasium, he attended the University of the Witwatersrand and obtained a B.Sc. degree in mining engineering in 1971. He completed an MPD at Unisa in 1980, and a PMB course at Harvard University in 1985.

He started his mining career at City Deep and, after graduating, spent 4 years at Durban Deep, progressing from graduate learner to Underground Manager. In 1975, he was transferred to Rand Mines Coal Division to assist with the planning, at Head Office, of Duvha and Rietspruit opencast mines. He was appointed Planning Manager at Duvha, and was a member of the team that established the Mine.

In 1981, he was transferred to Welgedacht Exploration Company as Mine Manager, and in 1982 was seconded to Head Office to lead the project team responsible for the development of Middelburg Mine. He was General Manager of Middelburg Mine Services until being promoted to Manager at Rand Mines (Mining & Services) in 1984. He is now Managing Director of Khutala, Majuba, and Rietspruit Mines.

He is married to Lyn, and they have 3 sons.



**Mr P.M.T. White** holds a B.Sc. (Eng.) in mining geology from the University of the Witwatersrand (1962) and an M.Eng. degree in mineral engineering management from the Pennsylvania State University (1974).

His working history includes 5 years in exploration and mine geology in South Africa, Zambia, Namibia, Canada, and the USA; 8 years with IBM South Africa as a computer systems engineer and mining applications specialist; 5 years as Assistant Professor at McGill University, Montreal, responsible for teaching and research in mineral and engineering economics, and for running the McGill Professional Development Programme in Mineral Economics, Management and Engineering; and 5 years as a consulting engineer to the energy (coal and tar sands) and mining industry.

He recently returned from 3 years in Edmonton, Canada, where he was President of the Coal Mining Research Company, a small contract applied-research organization. He is currently a Chief Engineer with the Techno-economics and Information Division of Mintek, working on the impact of transportation on the economics of bulk mineral commodities in South Africa.