



**SAIMM**  
THE SOUTHERN AFRICAN INSTITUTE  
OF MINING AND METALLURGY



Member of the Implats Group



# Pyro Week Technical visit to Impala Platinum Rustenburg Smelter

Date: 29 May 2026

## Background

Impala Platinum's Rustenburg operation is one of the world's largest and most advanced platinum-group-metals (PGM) producers. Located in Rustenburg, the site comprises a nine-shaft mining complex together with concentrators and a fully integrated smelter.

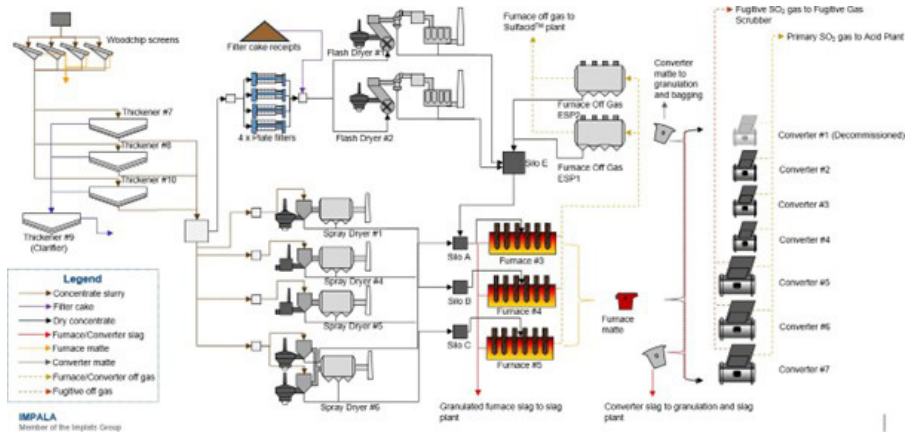
Merensky and UG2 ores are processed separately at dedicated concentrator plants. The smelter treats concentrate from both streams, while also offering toll smelting services managed through Impala Refining Services (IRS). The Smelter flowsheet consists of a drying section (Dewatering circuit, Niro-spray dryers and Flash dryers), three six-in-line furnaces, six converters and a bespoke off-gas treatment section. The resulting matte is transported to the company's Base Metal Refinery (BMR) and Precious Metal Refinery (PMR) in Springs for final refining.

## Accommodation of delegates:

- The Smelters can accommodate a team of 10-20 delegates.

## PPE requirements:

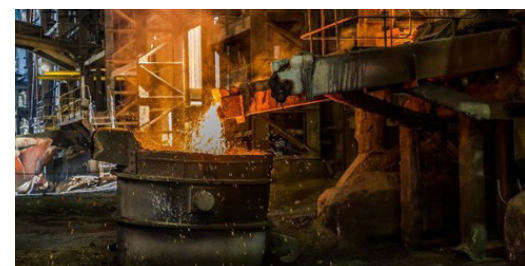
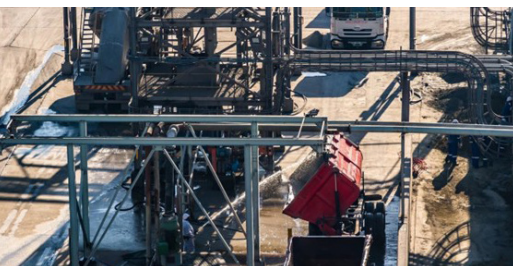
- All visitors entering the smelter **must wear**:
- Hard hat (head protection)
- Full overalls – heat-resistant overalls for the furnaces & converters, and acid-resistant overalls for the acid plant
- Safety boots
- Non-expired respirator (filter mask)
- Ear plugs



Process Flow Diagram

## Price:

R880.00p.p return



## For further information contact:

Gugu Charlie, Conferences and Events Co-ordinator  
E-mail: [gugu@saimm.co.za](mailto:gugu@saimm.co.za) | Tel: +27 11 538-0238 | Web: [www.saimm.co.za](http://www.saimm.co.za)

**REGISTER HERE**